



# JAGUAR

3.4 & 3.8 'S' MODELS





# SPECIFICATION

**ENGINE.** 6 cylinder 3.4 litre Jaguar XK engine. 70° twin overhead camshaft driven by a two stage roller chain. 83 mm. bore x 106 mm. stroke. Cubic capacity 3442 c.c. (210 cu. ins.). Compression ratio 8 : 1. Develops 210 b.h.p. at 5,500 r.p.m. Twin S.U. type HD6 carburettors and double exhaust system. 6 Cylinder 3.8 litre Jaguar XK engine. 70° twin overhead camshaft driven by a two stage roller chain. 87 mm. bore x 106 mm. stroke. Cubic capacity 3781 c.c. (230.6 cu. ins.). Compression ratio 8 : 1. Develops 220 b.h.p. at 5,500 r.p.m. Twin S.U. type HD6 carburettors and double exhaust system. For countries where fuel specifications require a change in compression ratio, alternative ratios are available. Cooling by pump and fan with bypass thermostat control. Forced lubrication by submerged pump system incorporating full flow filter. Chrome iron cylinder block. Cylinder head of high tensile aluminium alloy with hemispherical combustion chambers. Aluminium alloy pistons. Steel connecting rods. 2½ ins. diameter counterweighted crankshaft carried in seven large bearings.

**TRANSMISSION.** (Manually operated gearbox). Four speed single helical synchromesh gearbox. Gear-change lever between front seats. Dry plate clutch with hydraulic operation. Sealed bearing propeller shaft. Hypoid rear axle. Final drive ratio 3.54 : 1. Limited slip differential on 3.8 litre model.

**TRANSMISSION.** (Overdrive model). As above, with addition of a Laycock de Normanville overdrive controlled by a switch mounted on the steering column. Final drive ratio 3.77 : 1 (In overdrive—2.93). Limited slip differential on 3.8 litre model.

**TRANSMISSION.** (Automatic transmission model). Borg Warner Automatic Transmission system with driver controlled intermediate gear hold. Gear ratios : Low 17.6-8.16, intermediate 10.95-5.08. Direct top 3.54. Gear selector lever on steering column. Final drive ratio 3.54 : 1. Limited slip differential on 3.8 litre model.

**SUSPENSION.** Front. Independent suspension incorporating semi-trailing wishbones and coil springs with telescopic dampers. Anti-roll bar between lower wishbones. Suspension assemblies and steering gear are mounted on a separate subframe which is itself located in the body by rubber mountings.

**SUSPENSION.** Rear. Fully independent rear suspension incorporating on each side, a lower transverse tubular link pivoted at the wheel carrier and sub-frame adjacent to the differential case and, above this, a half-shaft universally jointed at each end. These serve to locate the wheel in a transverse plane. Longitudinal location is provided by the rubber mountings locating the sub-assembly in the body structure and by a radius arm between the lower link and a mounting point on the body structure. Twin coil springs, each enclosing a telescopic hydraulic damper, provide the suspension medium. The whole assembly together with the differential unit is carried in an easily detachable sub-frame which is located in the body structure by rubber mountings.

**BRAKES.** Dunlop bridge type disc brakes featuring quick change pads with automatic adjustment for wear. Vacuum servo assistance. Self adjusting 'pull up' type handbrake. Combined handbrake and brake fluid level warning light.

**STEERING.** Burman re-circulating ball type steering with 17 in. diameter two spoke steering wheel adjustable for reach. Left or right hand steering optional. Turning circle 33½ ft. Power assisted steering available as an optional extra.

**WHEELS AND TYRES.** Pressed steel bolt-on disc wheels fitted with Dunlop tyres. Wire spoke wheels available as an optional extra. Spare wheel and tyre.

**FUEL SUPPLY.** Two separate tanks—one in each rear wing—total capacity 14 gallons. Two electrically operated S.U. fuel pumps (one for each tank) controlled by change-over switch on instrument panel. The separate fillers to each tank remain hidden.

**ELECTRICAL EQUIPMENT AND INSTRUMENTS.** Lucas 12 volt battery. 60 amp/hour at 10 hour rate with current voltage control. Ventilated dynamo. Sidelamps. Sealed beam headlamps and foglamps, the former controlled by a foot operated dipswitch. Separate lever for actuating headlamp flashing. Separate stop/tail, direction and reflector units mounted in a single assembly. Reversing lamp. Self-cancelling flashing direction indicators with warning light. Instruments and labelled switches illuminated by internal flood lighting controlled by a 2-position dimmer switch. Concealed map reading lamp beneath screen rail in front compartment. Twin courtesy lights above the centre door pillars and a third lamp located above the rear window. All courtesy lights can be operated either manually by switch on instrument panel or automatically by any of the four doors. Cigar lighter with luminous socket. Twin blended windtone horns. Twin blade 2-speed self-parking windscreen wipers. Electrically operated windscreen washers. Interior illumination for luggage compartment. Starter motor. Vacuum and centrifugal automatic ignition advance. Oil coil ignition. 5 ins. diameter speedometer. 5 ins. diameter electrically driven revolution counter with electric clock. Ammeter, electrically operated oil pressure gauge, water temperature gauge, fuel gauge, combined handbrake and brake fluid level warning light.

**BODY.** All steel, four-door, five-seater saloon. Integral body-chassis construction providing maximum rigidity with minimum weight. Large zone-toughened windscreen with slim pillars and semi-wraparound rear window for maximum visibility front and rear. The semi-wraparound windscreen does not interfere with ease of entry or exit. Wide view rear mirror incorporating dimmed image position. Chromium-plated window frames to all doors. Chrome finishers on rain guttering and top of door waist rail. Seats upholstered in finest quality leather hide over deep foam rubber cushions. Front seats fitted with combined height and reach adjustment and reclining squabs. Central folding armrests in front and rear seats. Polished figured walnut instrument panel features revolution counter and speedometer positioned directly in front of driver and separate instruments for oil pressure, water temperature, fuel gauge and ammeter. Instrument panel also contains, on the passenger's side, a glove compartment with an interior light and lockable lid. A large padded parcel shelf runs the full width of the car beneath the instrument panel and houses the heater temperature control in its forward edge. A separate housing beneath the instrument panel contains a radio and speaker (optional extra) together with a very large ashtray. When no radio is fitted, the speaker grille is retained and the radio control panel aperture is blanked off with an escutcheon. Two-spoke steering wheel and semi-circular horn ring. Front and rear doors incorporate large pockets and armrests, whilst the rear doors also contain ashtrays. Central folding armrest in rear compartment. Sun visors. Deep pile carpets over thick felt underlay. Heavy duty wraparound bumpers with over-riders. "Zero-torque" door locks enable doors to be closed easily and quietly. Seat belt anchorage points are incorporated for both front and rear seats.

**HEATING AND DEMISTING.** Completely new fresh air heating system capable of high temperature and volume supply to front and rear compartments. Separate control regulates supply to rear compartment. Air intake vents and heater valves are vacuum servo assisted. Two-speed fan controlled by switch on instrument panel.

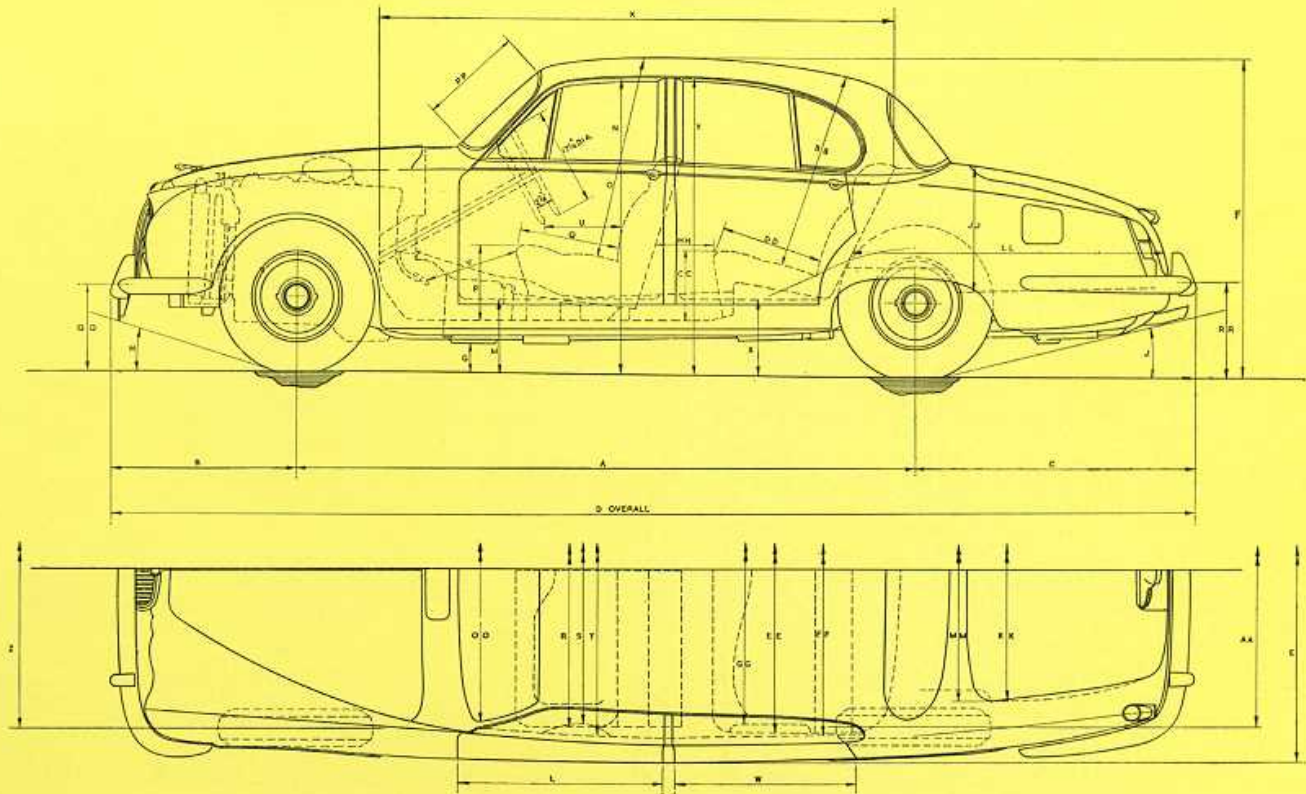
**LUGGAGE ACCOMMODATION.** Ample luggage accommodation is provided in a capacious compartment of 19 cu. ft. capacity. The lid is counter-balanced for ease of operation. Interior of compartment illuminated by night by a separate lamp. Compartment fully trimmed to protect luggage.

**SPARE WHEEL AND TOOLS.** The spare wheel is carried beneath the luggage compartment floor, in a separate compartment, and is readily accessible. The tools, in a special fitted and lined container, are housed in the spare wheel compartment. Jack and wheel brace (or wheel hammer on wire wheel models) housed in luggage compartment.

**JACKING.** Exterior jacking points, front and rear, enable the car to be lifted with the minimum of effort by means of the jack provided.

**PRINCIPAL DIMENSIONS.** Wheel base 8 ft. 11½ ins., track front 4 ft. 7½ ins., track rear 4 ft. 6½ ins., overall length 15 ft. 7½ ins., overall width 5 ft. 6½ ins.

## Jaguar 'S' Model General Dimensions



	English	Metric		English	Metric		English	Metric			
A	Wheelbase	107½	273	Q	Seat depth front	19	48	FF	Shoulder room	58	147
B	Front overhang	31½	81	R	Seat width front	54	137	GG	Width between armrests	52	132
C	Rear overhang	48½	122	S	Width between armrests	51	130	HH	Knee room rear	10½	26
D	Overall length	187½	477	T	Shoulder room	54	137	JJ	Max. height trunk	21	53
E	Overall width	66½	169	U	Steering wheel to squab	16	40	KK	Max. width trunk	45	114
F	Overall height	54½	138	V	Pedal to seat cushion	14-19	36-48	LL	Max. depth trunk	53	134
G	Ground clearance unladen	7	18	W	Rear door opening width	31	79	MM	Width at trunk opening	45	114
H	Front clearance angle	18°	18°	X	Step height rear	13	33	NN	Capacity of trunk	19 cu. ft.	538,019 cu. cm.
J	Rear clearance angle	14°	14°	Y	Ground to top of door	51½	130	OO	Windscreen width	49	124
K	Passenger compartment	89½	227	Z	Track front	55½	140	PP	Windscreen depth	16	40
L	Front door opening width	35½	90	AA	Track rear	54½	137	QQ	Front bumper height	14½	37
M	Front door step height	12½	32	BB	Headroom rear seat	35	89	RR	Rear bumper height	16½	41
N	Ground to top of front door	51½	130	CC	Seat height rear	12	30		Steering column angle	29½°	29½°
O	Headroom front seat	36	91	DD	Seat depth rear	18	46				
P	Seat height front	13½	34	EE	Seat width rear	57	145				

Unless otherwise stated, all dimensions are in inches and centimetres, applicable to a laden car. (Front seat shown in mid position—5" adjustment. Wheels fitted 6.40 x 15 tyres—rolling radius 12.75.)



## Press Comments . . .

" Superb — there's not a car in its class to touch it. " *(The Times)*.

" It proved a restful and safe car to drive over long distances — Fuel consumption averaged 17-23 m.p.g. " *(The Times)*.

" The interior of the Jaguar is superb — you would have to stand it next to models costing at least twice as much, even to find a standard of comparison. " *(Sunday Express)*.

" Engine noise was barely perceptible and the general standard of quietness was excellent . . . . " *(The Times)*.

" . . . will whisper up to 80 miles an hour while lesser drivers are making their first gear change. " *(Sunday Express)*.

" Another classic example of the Coventry company's adeptness at matching style and performance with progressive engineering. " *(The Times)*.

**( In a popularity poll at the New York Show the Jaguar 3.8 ' S ' model was voted " the best luxury compact (medium sized car) of 1964 " . )**

## JAGUAR CARS LTD. COVENTRY ENGLAND

*The issue of this catalogue does not constitute an offer. Jaguar Cars Ltd. reserve the right to amend specifications at any time without notice.*

Printed in England by W. W. Curtis Ltd., Coventry.



A red Jaguar car is parked on a street. In the background, there is a building with a large, dark, abstract sculpture that resembles a stylized, twisted tree or a series of overlapping, curved shapes. The car is a two-door model with a sleek, aerodynamic design. The background is a plain, light-colored wall.

## Introduction . . .

The wide choice of high performance high quality motoring which the Jaguar range provides is now further extended by the introduction of the 3.4 'S' and 3.8 'S' Models.

These make available, in a car of compact dimensions, the very latest refinements in Jaguar design and engineering.

With impeccable body styling and spacious interior proportions, seating for five adults, all-round independent suspension and disc brakes on all four wheels, a new interior heating and ventilating system with infinitely variable control, reclining seats, twin petrol tanks, exceptionally large luggage boot, and with many more features combining to give performance, comfort and value such as only Jaguar offer, the 'S' Models truly uphold the Jaguar tradition of providing—

A special kind of motoring which no other car in the world can offer.



*A new conception in Luxury Motoring*



The quiet power of the Jaguar 'S' Model, its superb suspension and luxuriously appointed interior guarantee absolute comfort for any journey regardless of distance or road conditions.

Superior coachwork finish and interior trim complete the picture of luxury afforded by this car which, in its class, has no equal.





### **Luxury and Refinement in the True Jaguar Tradition**

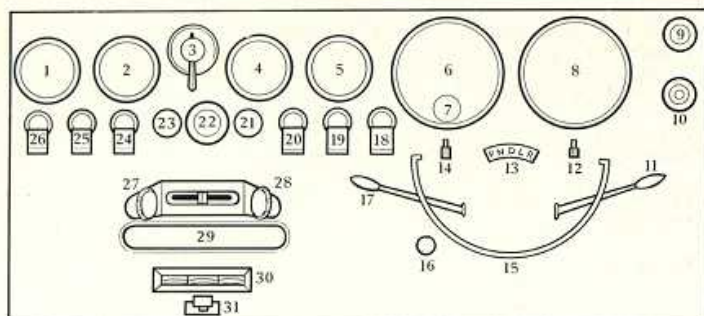
The Jaguar 'S' Model is a five seater saloon with increased interior space, head and leg room, affording the highest degree of comfort front and rear. Individual front seats, with combined adjustment for reach and height, feature reclining back rests. Front and rear seats have folding centre arm rests. All upholstery is in finest quality leather hide over deep foam rubber cushions. High quality carpets are fitted throughout. All woodwork is in polished figured walnut.

A high efficiency fresh air heating and ventilating system, with individual controls for front and rear compartments, provides an infinite range of temperatures and volume together with rapid defrosting and demisting of the windscreen.



Ample luggage accommodation is provided in a capacious compartment of 19 cubic feet capacity. The lid is counter-balanced for ease of operation. The interior is illuminated by night and is fully trimmed to protect luggage.

A comprehensive range of instruments together with a row of clearly labelled switches are mounted in a polished walnut panel. Space for personal effects is provided by a glove compartment with lock and interior light, and a full width parcel shelf.

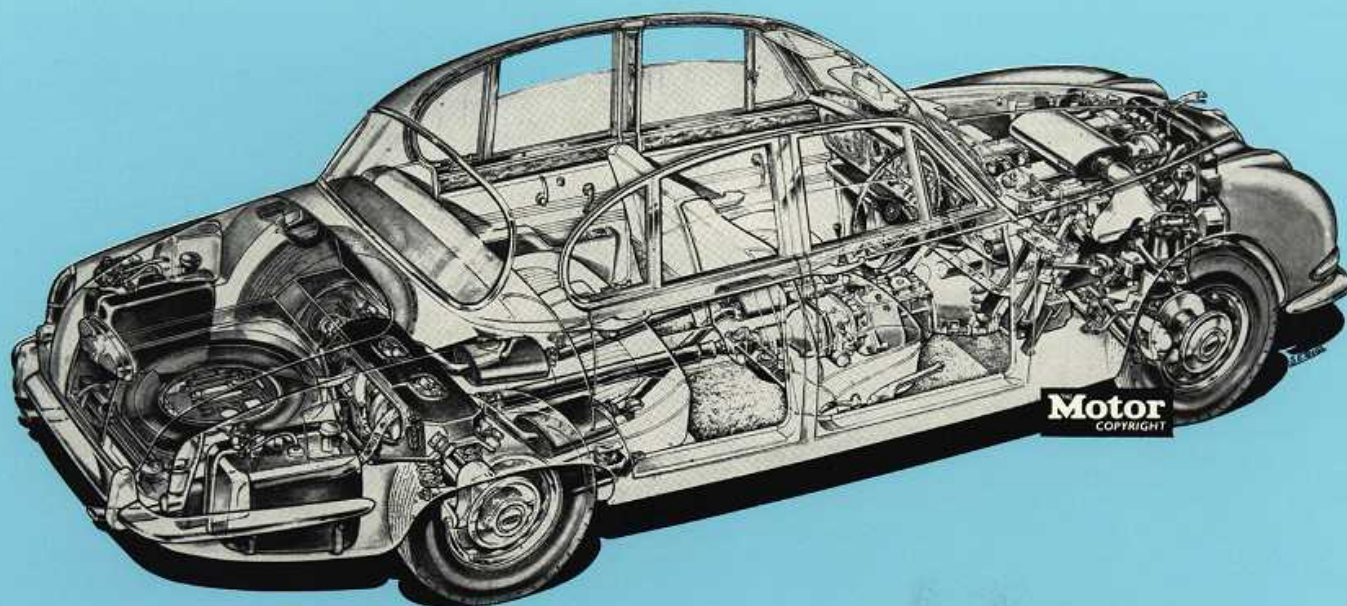


#### KEY TO INSTRUMENT PANEL

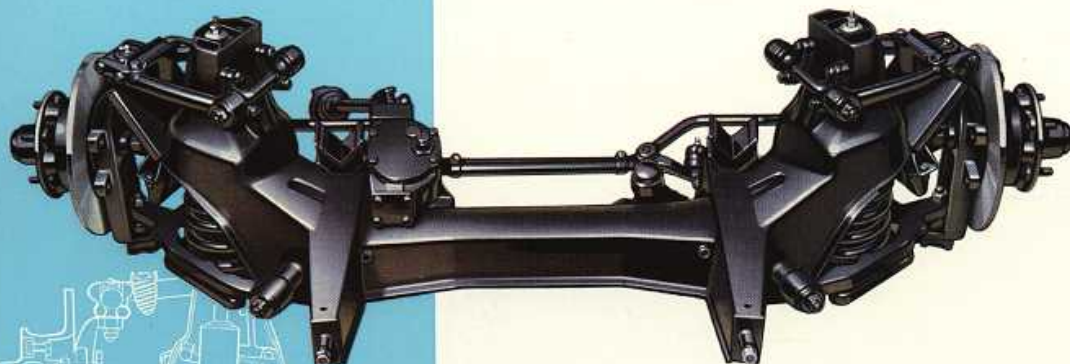
- |   |  |
|---|--|
| 1. Ammeter.   | 16. Headlamp dipper foot switch.   |
| 2. Fuel gauge.  | 17. Direction indicator and headlamp flashing switch.                                    |
| 3. Lighting switch.   | 18. Windscreen washer switch.  |
| 4. Oil pressure gauge.  | 19. Windscreen wiper switch.   |
| 5. Water temperature gauge.                                       | 20. Fuel tank changeover switch.   |
| 6. Revolution counter.  | 21. Starter switch.  |
| 7. Electric clock.  | 22. Cigar lighter.   |
| 8. Speedometer.   | 23. Ignition switch.   |
| 9. Intermediate speed hold switch. (Automatic drive models only). | 24. Heater fan switch.   |
| 10. Brake Fluid Level/Handbrake warning light.                    | 25. Panel light switch.  |
| 11. Automatic transmission selector lever.                        | 26. Interior/Map light switch.   |
| 12. Speedo trip control.  | 27 & 28. Ventilating controls for front compartment, either side of temperature control. |
| 13. Automatic transmission indicator panel.                       | 29. Radio console.   |
| 14. Clock adjuster.   | 30. Heater control switches.   |
| 15. Horn switch.  | 31. Ventilating control for rear compartment.  |



## Salient features of the Jaguar 'S' Model



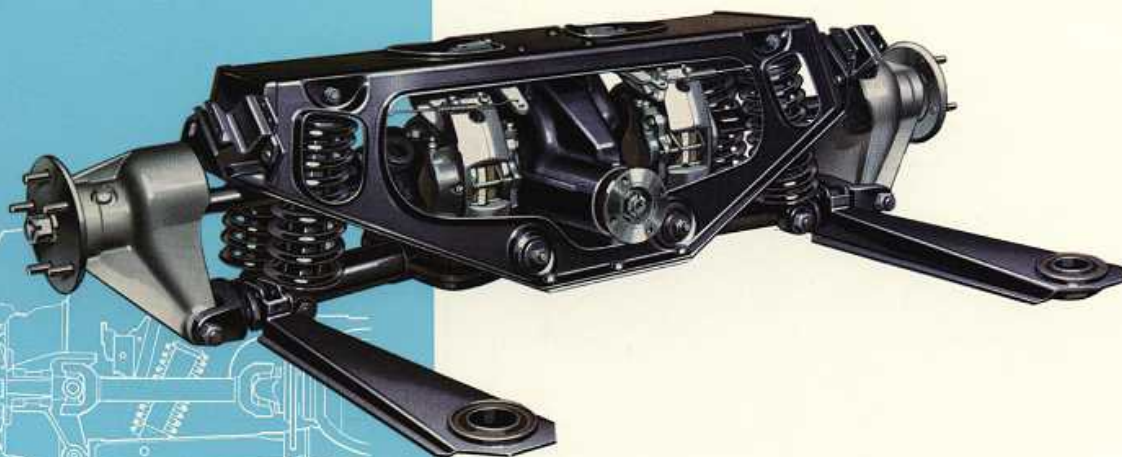
- \* Full five seater saloon, lavishly equipped and superbly finished.
- \* Independent suspension and disc brakes on all four wheels.
- \* Individual front seats with combined adjustment for reach and height, reclining back rests and central folding armrest.
- \* Shaped rear seats with central folding armrest, provide maximum comfort for two or three persons.
- \* High efficiency fresh air type heating and demisting system providing a wide choice of settings.
- \* Large luggage compartment giving an entirely unobstructed capacity of 19 cubic feet.
- \* Choice of 3.4 or 3.8 litre 6 cylinder XK engines.
- \* Choice of manual change transmission—with or without overdrive—or fully automatic transmission.
- \* Large fuel tank capacity of 14 gallons, carried in two separate tanks.
- \* Comprehensive instrumentation.



#### FRONT

Incorporating semi-trailing wishbones, coil springs with telescopic dampers, and anti-roll bars, this assembly, together with steering gear, is mounted on a separate sub-frame which is itself located in the body by rubber mountings.

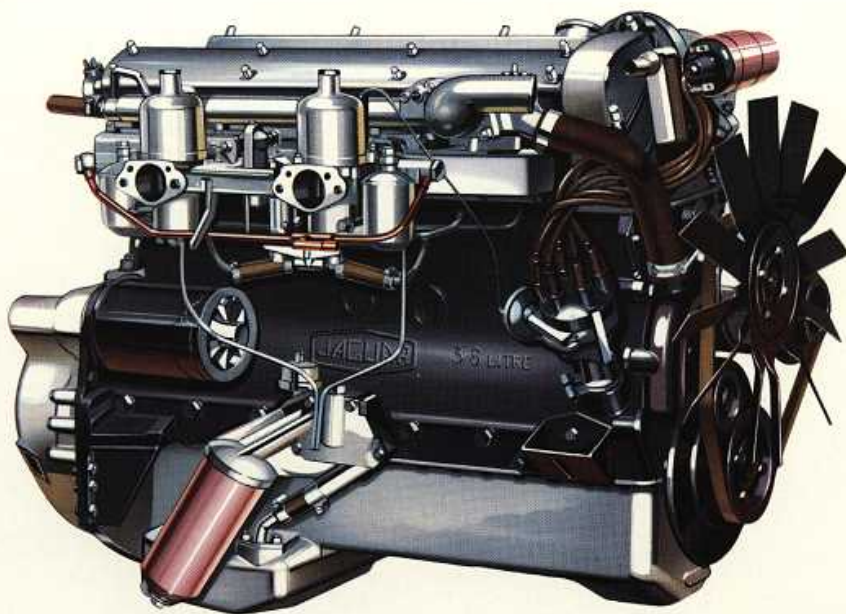
## independent suspension . . . . .



#### REAR

This assembly incorporates on each side, a lower transverse tubular link pivoted at the wheel carrier and sub-frame, a radius arm, a half shaft universally jointed at each end, and twin coil springs enclosing telescopic hydraulic dampers. The whole assembly, together with the differential unit, is carried in a sub-frame which is located in the body structure by rubber mountings.





### The World Famous XK Engine

The Jaguar 6 cylinder twin overhead camshaft XK engine is acknowledged throughout the world as a perfect expression of engineering efficiency. Its high power output over a wide speed range, its durability and smoothness have endowed it with this world wide reputation—a reputation further enhanced by the many victories won by Jaguar cars in international rallies and races all over the world.

A choice of two XK engines is available for the Jaguar 'S' model, the 3.4 or 3.8 litre, comparative data for which is given below.

#### 3.4 LITRE 'S' MODEL

No. of cylinders	6 in line.
Bore	3.2677" (83 mm.).
Stroke	4.1732" (106 mm.).
Capacity	3442 c.c. (210.6 cu. ins.).
R.A.C. rating	25.6 h.p.
Compression ratio	8 : 1 (7 or 9 : 1 optional).
Piston area	50.32 sq. ins. (324.6 sq. cms.).
Max. B.H.P. at R.P.M.	210 at 5500.
Max. Torque at R.P.M.	215 ft. lbs. at 3000. (29.71 M.kgs. at 3000).

#### 3.8 LITRE 'S' MODEL

No. of cylinders	6 in line.
Bore	3.425" (87 mm.).
Stroke	4.1732" (106 mm.).
Capacity	3781 c.c. (230 cu. ins.).
R.A.C. rating	28.15 h.p.
Compression ratio	8 : 1 (7 or 9 : 1 optional).
Piston area	55.28 sq. ins. (356.6 sq. cms.).
Max. B.H.P. at R.P.M.	220 at 5500.
Max. Torque at R.P.M.	240 ft. lbs. at 3000. (33.2 M. kgs. at 3000).

